

**PIP5KL1 Antibody (N-term)**  
**Affinity Purified Rabbit Polyclonal Antibody (Pab)**  
**Catalog # AP11297a**

**Specification**

---

**PIP5KL1 Antibody (N-term) - Product Information**

Application	WB, IF, IHC-P,E
Primary Accession	<a href="#">Q5T9C9</a>
Other Accession	<a href="#">NP_001128691.1</a>
Reactivity	Human
Host	Rabbit
Clonality	Polyclonal
Isotype	Rabbit IgG
Calculated MW	44572
Antigen Region	57-86

**PIP5KL1 Antibody (N-term) - Additional Information**

**Gene ID** 138429

**Other Names**

Phosphatidylinositol 4-phosphate 5-kinase-like protein 1, PI(4)P 5-kinase-like protein 1, PtdIns(4)P-5-kinase-like protein 1, PIP5KL1

**Target/Specificity**

This PIP5KL1 antibody is generated from rabbits immunized with a KLH conjugated synthetic peptide between 57-86 amino acids from the N-terminal region of human PIP5KL1.

**Dilution**

WB~~1:1000  
IF~~1:10~50  
IHC-P~~1:50~100  
E~~Use at an assay dependent concentration.

**Format**

Purified polyclonal antibody supplied in PBS with 0.09% (W/V) sodium azide. This antibody is purified through a protein A column, followed by peptide affinity purification.

**Storage**

Maintain refrigerated at 2-8°C for up to 2 weeks. For long term storage store at -20°C in small aliquots to prevent freeze-thaw cycles.

**Precautions**

PIP5KL1 Antibody (N-term) is for research use only and not for use in diagnostic or therapeutic procedures.

**PIP5KL1 Antibody (N-term) - Protein Information**

**Name** PIP5KL1

**Function** May act as a scaffold to localize and regulate type I PI(4)P 5-kinases to specific compartments within the cell, where they generate PI(4,5)P<sub>2</sub> for actin nucleation, signaling and scaffold protein recruitment and conversion to PI(3,4,5)P<sub>3</sub>.

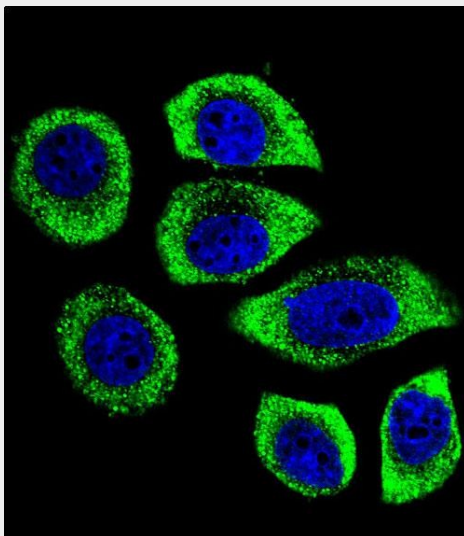
**Cellular Location**

Cytoplasm. Membrane. Note=Localized to large cytoplasmic vesicular structures.

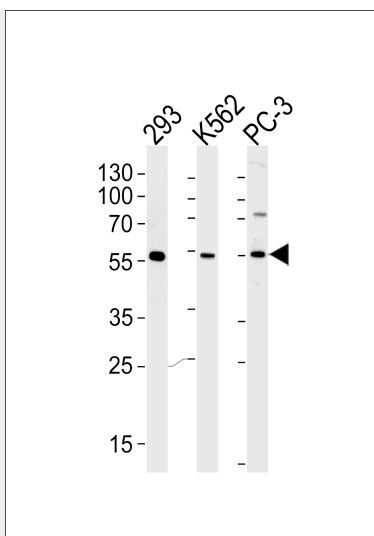
**PIP5KL1 Antibody (N-term) - Protocols**

Provided below are standard protocols that you may find useful for product applications.

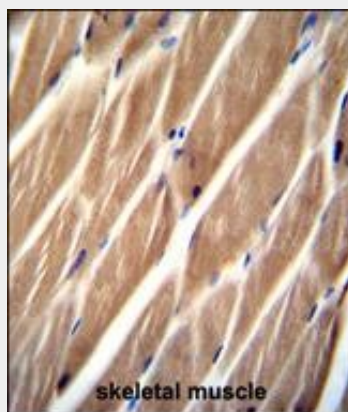
- [Western Blot](#)
- [Blocking Peptides](#)
- [Dot Blot](#)
- [Immunohistochemistry](#)
- [Immunofluorescence](#)
- [Immunoprecipitation](#)
- [Flow Cytometry](#)
- [Cell Culture](#)

**PIP5KL1 Antibody (N-term) - Images**

Confocal immunofluorescent analysis of PIP5KL1 Antibody (N-term)(Cat#AP11297a) with U-251MG cell followed by Alexa Fluor 488-conjugated goat anti-rabbit IgG (green). DAPI was used to stain the cell nuclear (blue).



Western blot analysis of lysates from 293, K562, PC-3 cell line (from left to right), using PIP5KL1 Antibody (N-term) (Cat. #AP11297a). AP11297a was diluted at 1:1000 at each lane. A goat anti-rabbit IgG H&L (HRP) at 1:5000 dilution was used as the secondary antibody. Lysates at 35ug per lane.



PIP5KL1 Antibody (N-term) (Cat. #AP11297a) immunohistochemistry analysis in formalin fixed and paraffin embedded human skeletal muscle followed by peroxidase conjugation of the secondary antibody and DAB staining. This data demonstrates the use of PIP5KL1 Antibody (N-term) for immunohistochemistry. Clinical relevance has not been evaluated.

### PIP5KL1 Antibody (N-term) - Background

PIP5KL1 is a phosphoinositide kinase-like protein that lacks intrinsic lipid kinase activity but associates with type I PIPKs (see PIP5K1A; MIM 603275) and may play a role in localization of PIPK activity (Chang et al., 2004 [PubMed 14701839]). [supplied by OMIM].

### PIP5KL1 Antibody (N-term) - References

- Shi, L., et al. Mol. Biol. Rep. 37(5):2189-2198(2010)
- Lamesch, P., et al. Genomics 89(3):307-315(2007)
- Chang, J.D., et al. J. Biol. Chem. 279(12):11672-11679(2004)